



# Vicinity Centres Bankstown Masterplan

## Landscape Concept Master Plan

for Planning Proposal  
Vicinity Centres

15 March 2022



# Bankstown Landscape Concept Master Plan

## Contents:

**1.0** Publicly Accessible Open Space Opportunities

**2.0** Landscape Concept Masterplan

**3.0** Relevant Policies and Guidelines

**4.0** Overarching Principles

01 Connectivity

02 Participation

03 Integration

04 Multi-functionality

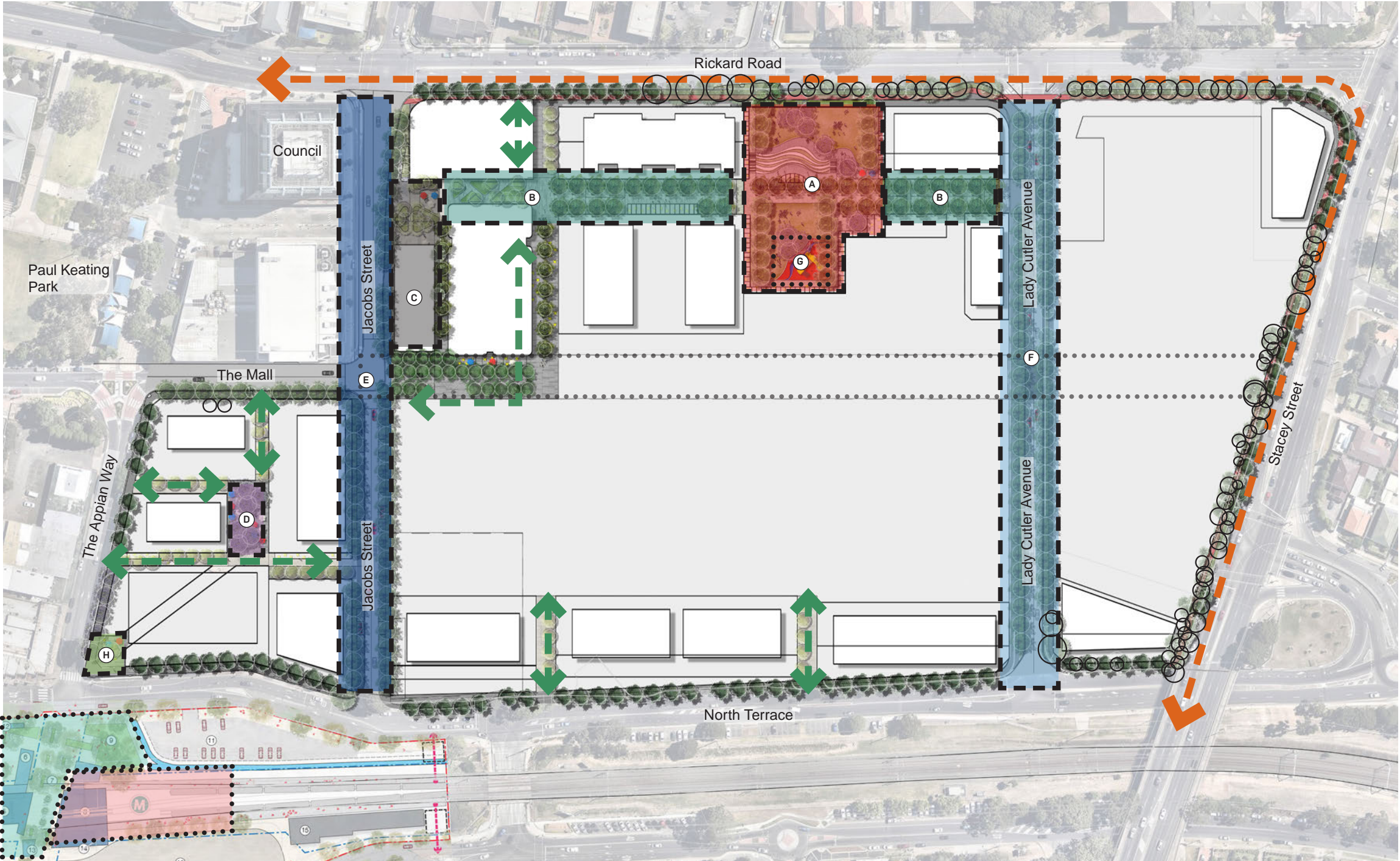
**5.0** Publicly Accessible Open Spaces

- City Park + Event Play
- Garden Boulevard
- Jacobs Street Food Plaza + Lady Cutler Avenue Urban Plaza

**6.0** Vicinity Bankstown Place Pillars



# 1.0 Publicly Accessible Open Space Opportunities



- Legend**
- City Park (A)
  - Garden Boulevard (B)
  - Jacobs Street Food Plaza (C)
  - Urban Plaza (D)
  - Jacobs Street (Including extension of (E) shared bus and pedestrian zone)
  - Lady Cutler Avenue Pedestrian Avenue (F)
  - Event/ Play Space (G)
  - The Appian Way Arrival Plaza (H)
  - New Metro Station
  - New Metro Plaza
  - Railway Corridor
  - Future Through Site Link Within Retail Centre
  - Shared Path
  - Pedestrian Laneways
  - Existing Street Trees to be Retained. Infill with New StreetTree Planting = Green Streets



# 2.0 Landscape Concept Master Plan



- Legend
- (A) City Park
  - (B) Garden Room
  - (C) Urban Plaza
  - (D) Jacobs Street Food Lane
  - (E) Jacobs Street (Including extension of shared bus and pedestrian zone)
  - (F) Lady Cutler Avenue Pedestrian A venue
  - (1) Amphitheatre
  - (2) Stage
  - (3) Adventure Play (Sculptural)
  - (4) Community Lawn
  - (5) Passive Recreation - Seating Pods, Work Stations
  - (6) Flexible Civic Space
  - (7) Green Streets Shared Pedestrian / Cycle Path
  - (8) Pedestrian Laneways
  - (9) Market Lawn
  - (10) Pedestrian Crossing
  - (11) Covered Food + Beverage Outdoor Dining
  - (12) New Metro Station
  - (13) New Metro Plaza
  - (14) The Appian Way Arrival Plaza
  - Existing Trees to be Retained
  - +25.0 Levels
  - Railway Corridor

NOTE: All streets are aligned with the Clty of Canterbury Bankstown 'Complete Streets' Strategy.

## 3.0 Relevant Policies and Guidelines



### 01 Bankstown Complete Streets

- Provides an integrated transport and streetscape plan
- Aims provide, slower, safer streets that improve access and create more attractive spaces
- Places pedestrians at the top of the transport hierarchy for the future of Bankstown



### 02 Draft Design and Place SEPP

- Aims to improve long term design and place outcomes such as:
  - More productive use of land and better use of infrastructure investment
  - More resilient places that respond to impacts of climate change
  - Healthier, better quality public spaces and green infrastructure



### 03 Urban Green Cover in NSW

- Best practice and guidelines to increase the resilience of NSW settlements
- Guideline for communities in response to climate change
- Provides practical information and typical details to encourage best practice applications of green cover and minimise urban heat impacts

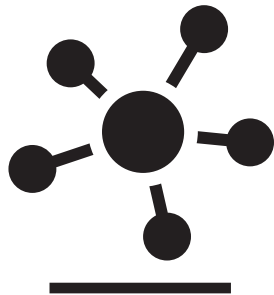


# 4.0 Overarching Principles

Aligned with 'Greener Places' - Government Architect NSW Document

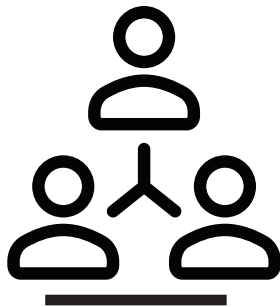


## 01 Connectivity



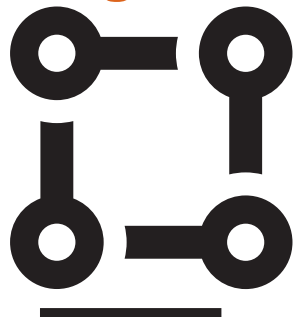
Create an interconnected network of open space

## 02 Participation



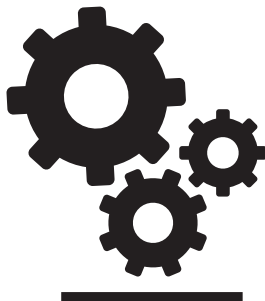
Involve stakeholders in development and implementation of neighbourhood initiatives

## 03 Integration



Combine green infrastructure with urban development and grey infrastructure

## 04 Multi-Functionality

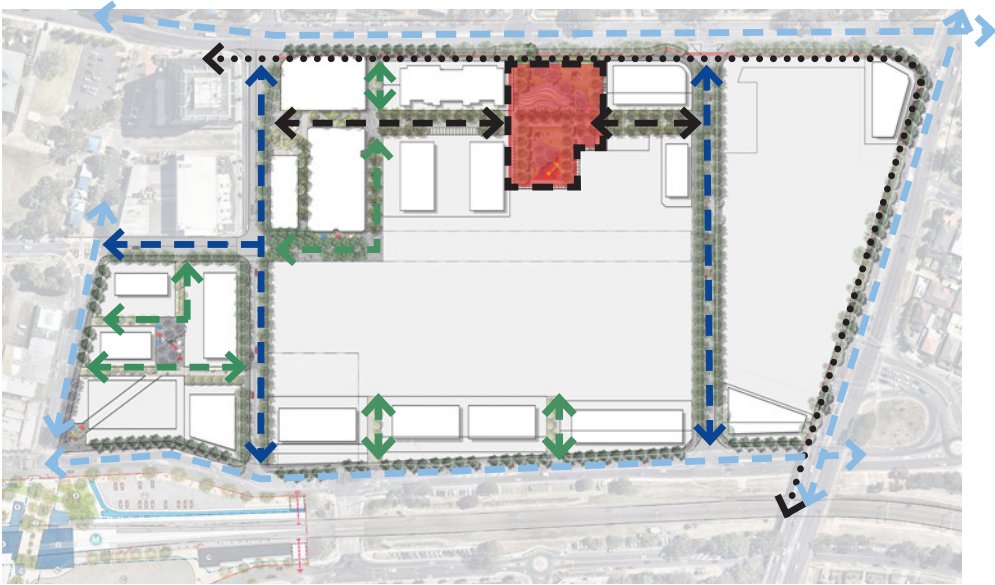


Deliver multiple ecosystem services simultaneously to improve health and wellbeing

## 01 Connecivity

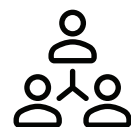


- Investigate and enhance physical and functional connections
- Consider green space networks at multiple scales
- Maximise health and wellbeing through walking, cycling and jogging
- Highlight landscape and heritage and support local economy

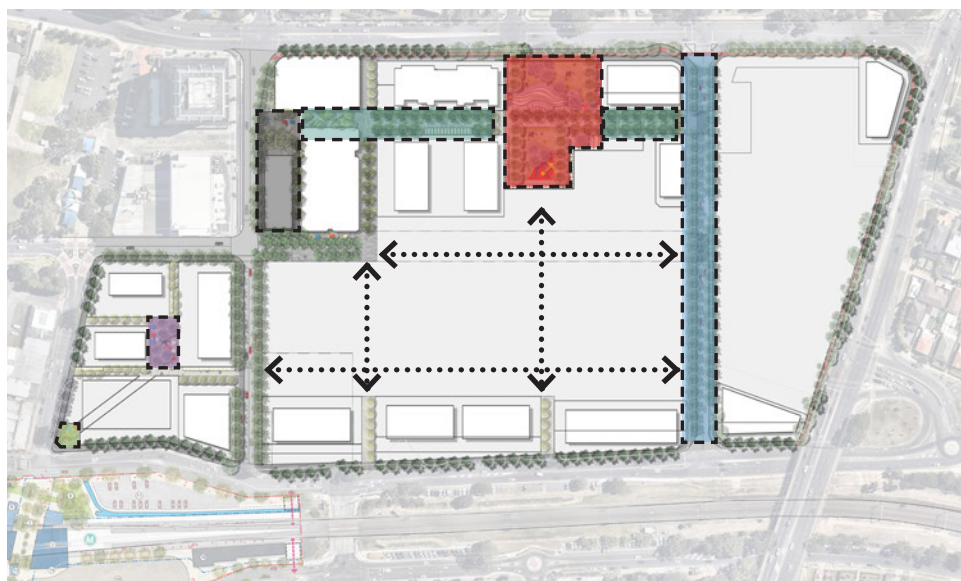


- Legend
- City Park
  - Shared Path
  - Garden Boulevard
  - Pedestrian Laneways
  - Green Streets with Pedestrian Priority
  - Green Streets

## 02 Participation



- Enable different government and community groups to contribute
- Consider needs, values, motivations, uses and barriers to engage with various cultures and users
- Encourage use of underutilised open space corridors for local community use



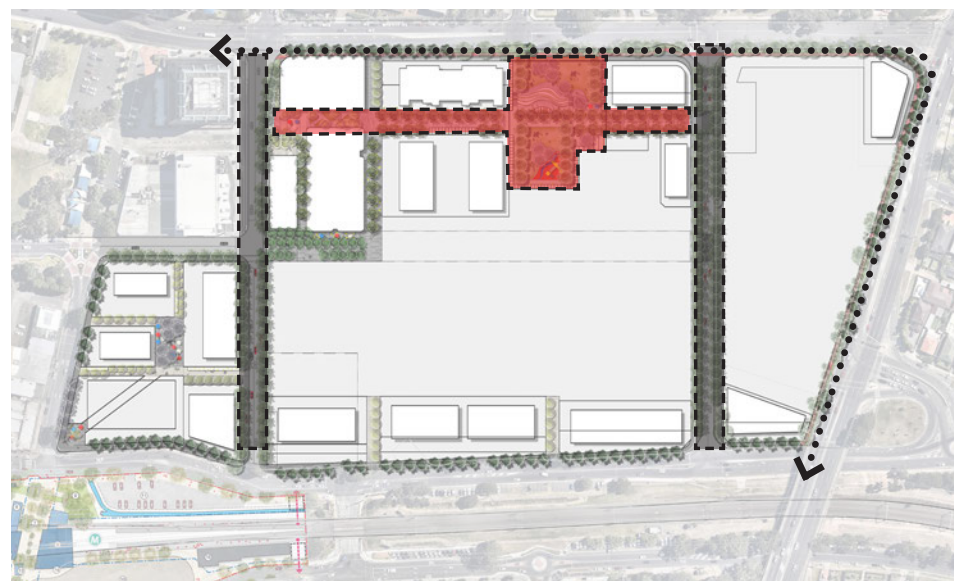
### Legend

- City Park
- Garden Boulevard
- Jacobs Street Food Plaza
- Urban Plaza
- Lady Cutler Avenue Pedestrian Avenue
- The Appian Way Arrival Plaza
- Connections Through the Centre

## 03 Integration



- Ensure and facilitate integration of green and grey infrastructure
- Create urban communities that deliver quality of life to residents and community
- Understand and implement wider environmental, social and economic benefits from green-grey integration
- Multi-purpose system that mimics nature, promotes healthy and active living



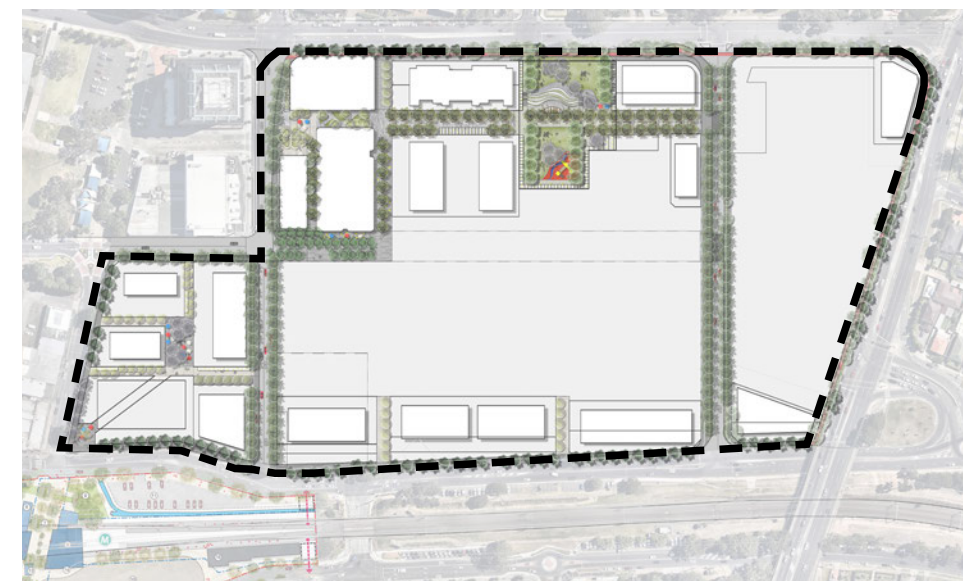
### Legend

- Pedestrian Boulevard
- Shared Path
- Shared Path

## 04 Multi-Functionality



- Offer ecological, socio-cultural and economic benefits
- Design spaces that offer interaction and stewardship, community identity and sense of connectedness
- Create open space that connects and enhances the new project through high quality, high performing green space
- Flexible + diverse open space



### Legend

- The Publicly Accessible Open Space Master Plan



# 5.0 Publicly Accessible Open Spaces

## City Park + Event Play

### One Central Park Sydney

Selected for:

- It's similar scale, size and programming of spaces
- Integration into medium-high density residential towers
- Proximity to existing retail and shopping

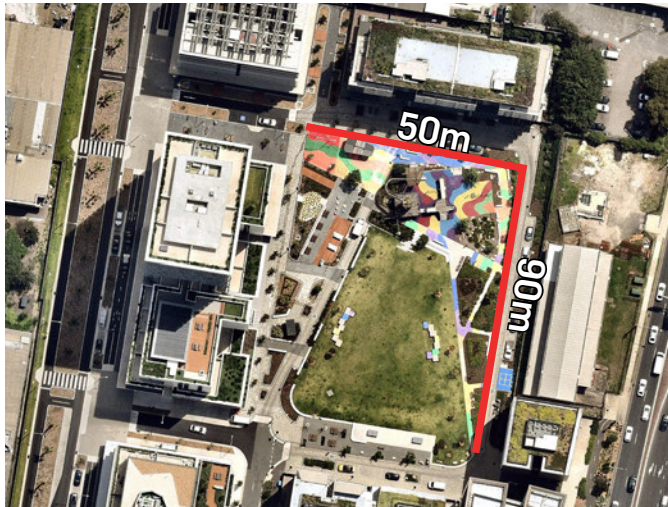
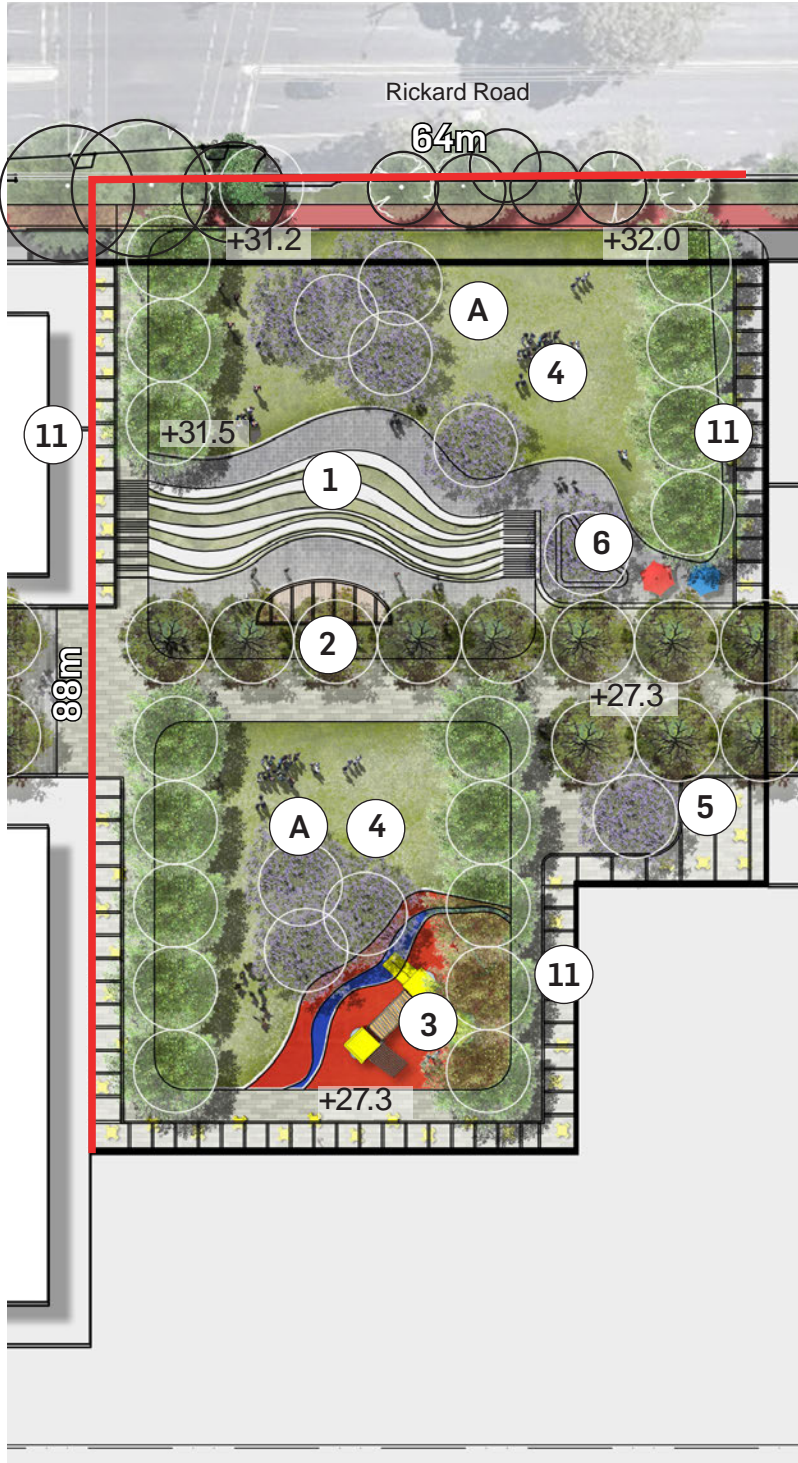
### Wulaba Park Sydney

Selected for:

- It's similar scale and size of play spaces
- Combination of play and open space surrounded by residential and mixed use developments

Legend

- (A) City Park
- (1) Amphitheatre
- (2) Stage
- (3) Adventure Play (Sculptural)
- (4) Community Lawn
- (5) Seating Plaza
- (6) Lookout Point
- (11) Covered Food + Beverage Outdoor Dining
- Existing Trees to be Retained
- +25.0 Levels





# Precedent Study

## Garden Boulevard

### Westfield Chermside Brisbane

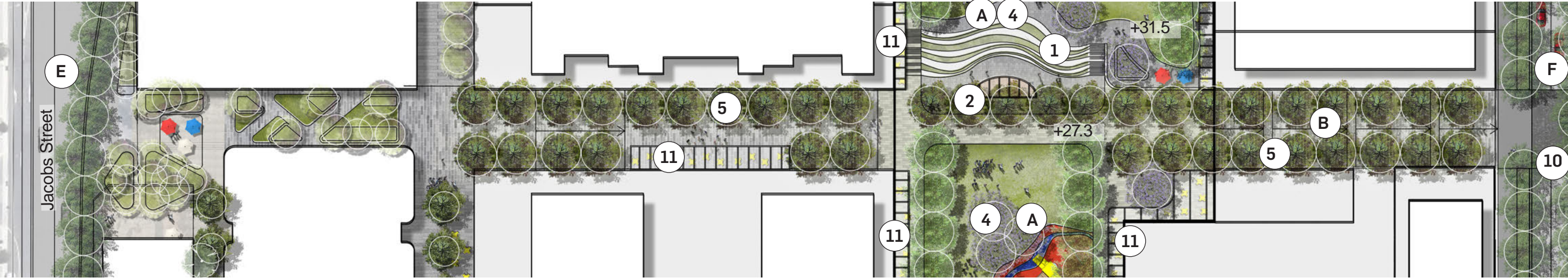
Selected for:

- It's similar scale and size of spaces
- Linear journey punctuated by a sense of events + destination



Legend

ⓑ	Garden Boulevard
①	Amphitheatre
②	Stage
⑤	Passive Recreation - Seating Pods, Work Stations
④	Community Lawn
⑪	Covered Food + Beverage Outdoor Dining
+25.0	Levels





# Precedent Study

## Jacobs Street Food Plaza

### Rouse Hill Town Centre Sydney

Selected for:

- It's similar scale and size of spaces
- Outdoor programming relating to surrounding buildings and functions

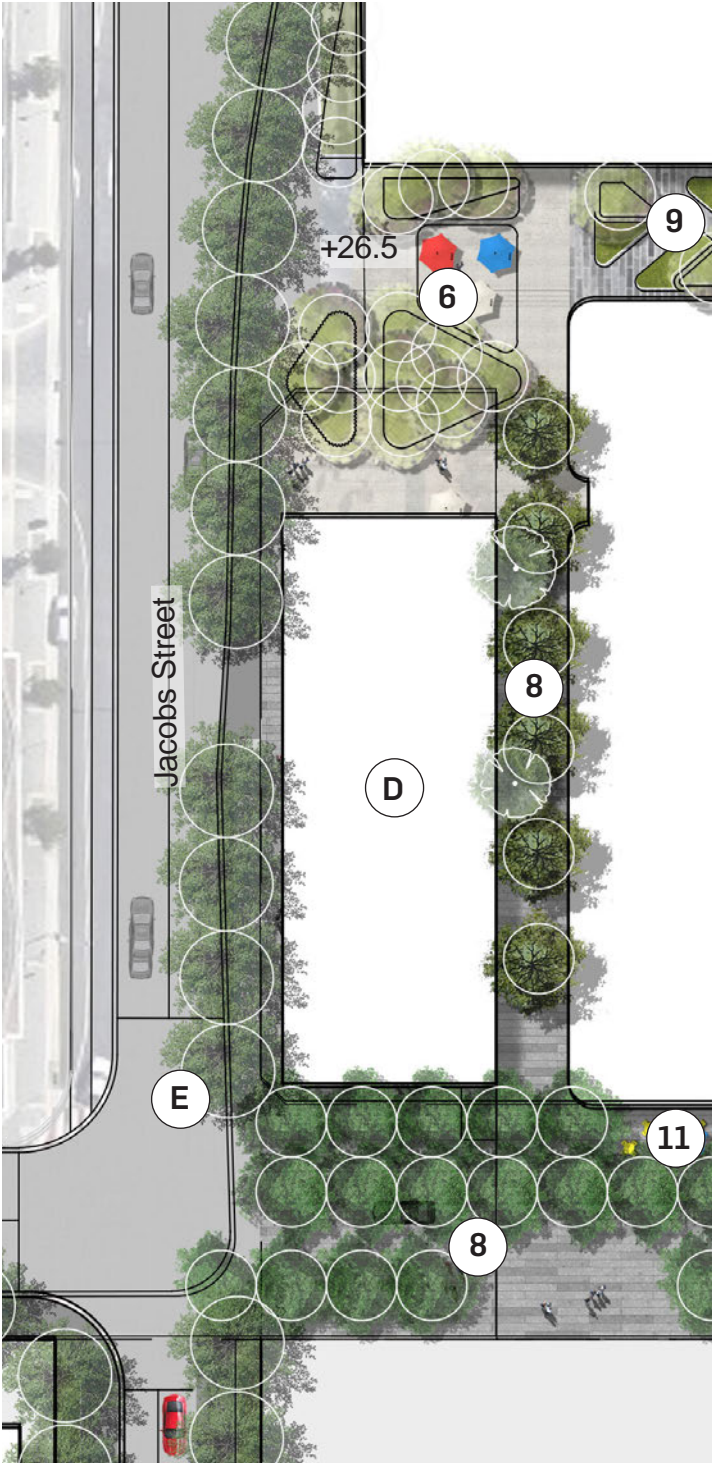
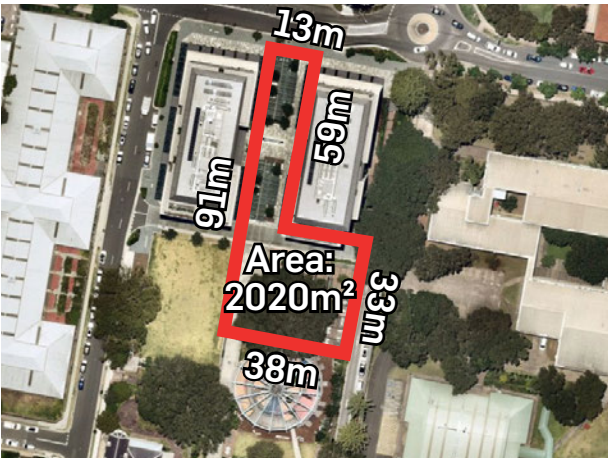
### Randwick Newmarket Sydney

Selected for:

- It's similar scale and sequence of spaces
- Integrated programming and functions

Legend

- (D) Jacobs Street Pavilion
- (E) Jacobs Street Extention
- (6) Flexible Civic Area
- (8) Pedestrain Laneways
- (9) Garden Room
- (11) Covered Food + Beverage Outdoor Dining
- +25.0 Levels





# Precedent Study

## Urban Plaza

### QV Plaza Melbourne

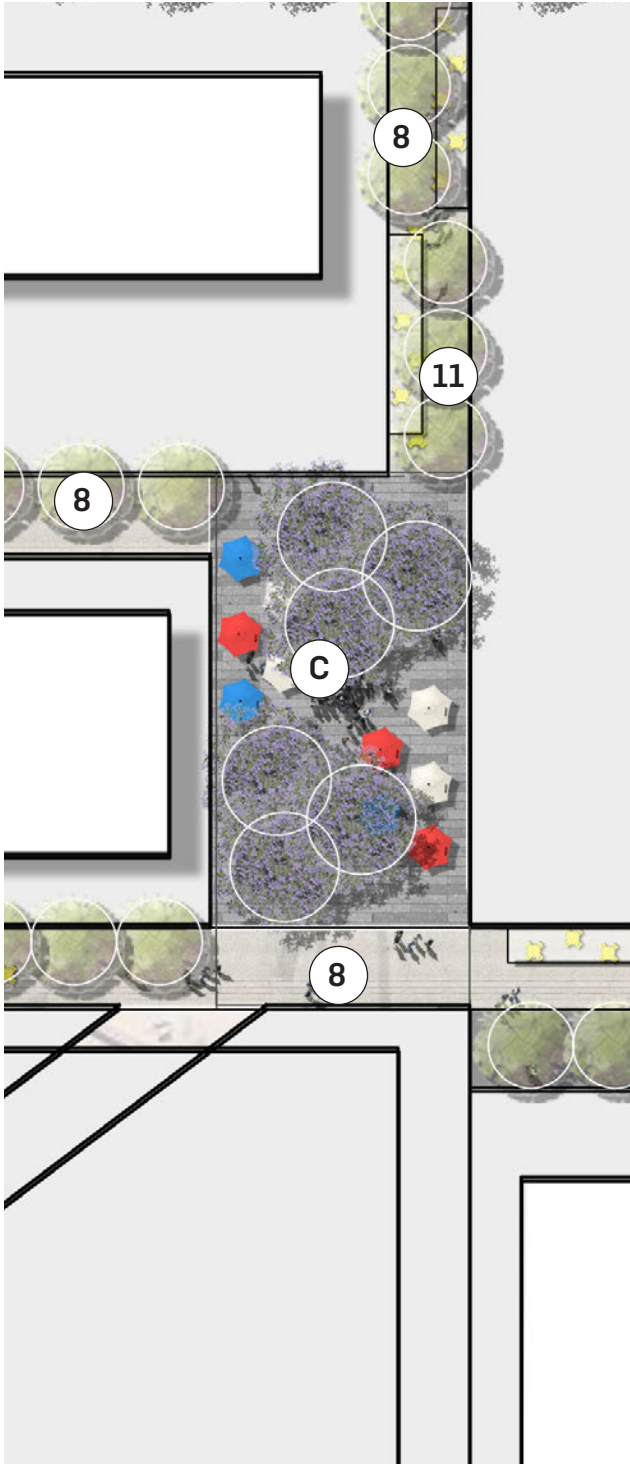
Selected for:

- It's similar scale and sizes of spaces
- It's proximity to mixed use high rise building framing the urban plaza



Legend

- (C) Urban Plaza
- (8) Pedestrian Laneways
- (11) Covered Food + Beverage Outdoor Dining
- +25.0 Levels





# 6.0 Vicinity Bankstown Place Pillars



Inspired Mixed Use Community Lifestyle Hub

*Always on and for everyone*

01



Proud and Authentic Eastern Cultural Celebration and Experience

*Melting pot of iconic Eastern culture, creativity, commerce and customs*

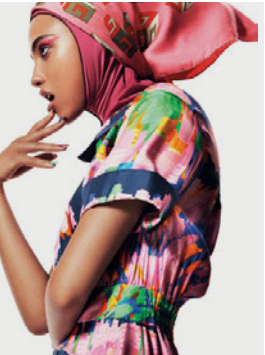
02



Abundant Fresh Food and Big Flavour Destination

*One incredible Eastern food festival every day*

03



Affordable to Aspirational Value Shopping Metropolis

*Where amazing deals are had on the hottest items*

04



Innovative to Indulgent Health, Beauty and Wellness Oasis

*Where you go to look hot and feel great*

05



Magnetic Leisure and Entertainment Wonderland for the Young and Young at Heart

*The place for fun, escape and making memories*

06

